

This manual describes how to update the firmware of WT310E/WT310EH/WT332E/WT333E Digital Power Meters (hereafter referred to as the WT300E).

Be sure to follow the procedure in this manual to update the firmware.

Preparation

Installing the USB Driver

You can update the firmware by connecting the WT300E to your PC with a USB cable and using the firmware update tool.

To use the tool, YOKOGAWA's USB driver (YKMUSB) must be installed in your PC.

When you install the WTVIEWERFreePlus application software in your PC from the CD-R supplied with the WT300E, the USB driver is also installed automatically.

For information on how to install WTVIEWERFreePlus, see the WTVIEWERFreePlus User's Manual, IM 760121-02EN.

Firmware Update Tool

When you unzip the downloaded file, the folder will contain the following files.

BootloaderDownloadApp.exe	(update program)
BootloaderDownloadApp.ini	(configuration file)
bootload.dll,tmctl.dll,YKMUSB.dll	(DLL files)
wt300e.firm	(data file for the firmware)

Place the unzipped folder directly under drive C (c:\).

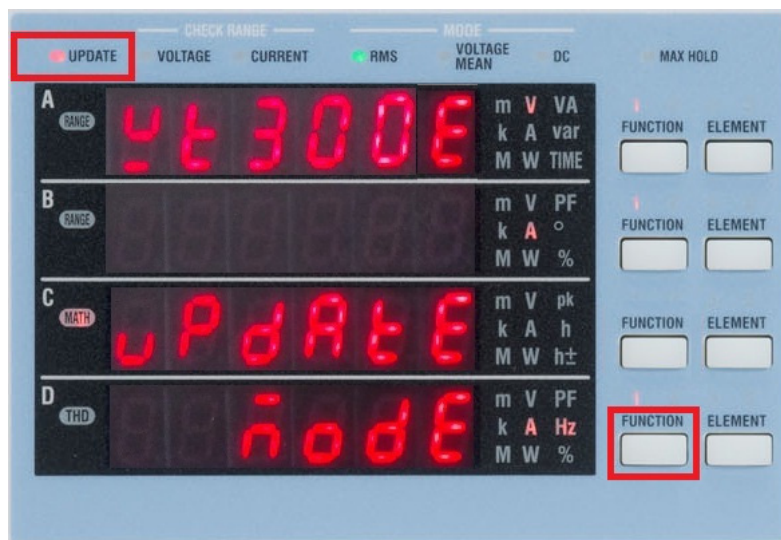
Before Starting to Update the Firmware

When you update the firmware, the WT300E setup parameters will be reset to their factory default values. If necessary, back up the setup parameters.

Firmware Update Procedure

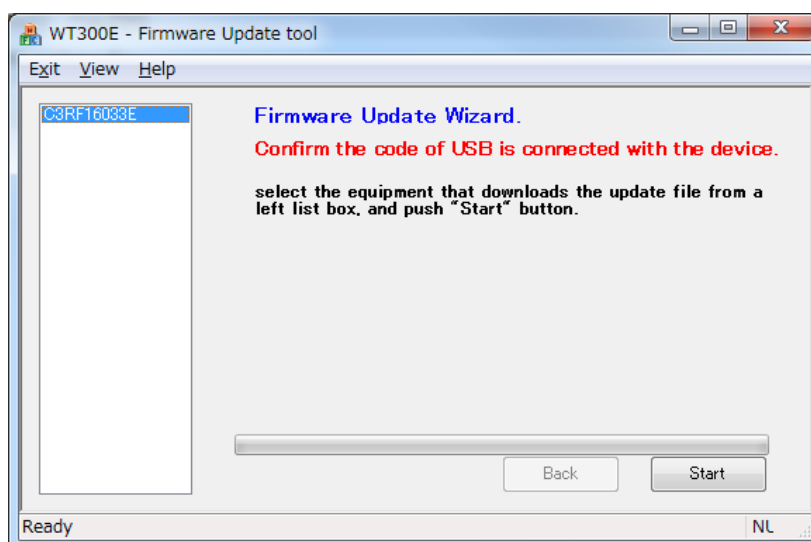
Operating the WT300E

1. Using a USB cable, connect the USB port for PCs on the rear panel to the PC.
2. While holding down the FUNCTION key next to display D on the front panel, turn on the power switch. Keep holding down the key until a message appears on the display.
3. As shown below, the message "WT300E UPDATE MODE" appears, and the WT300E enters firmware update mode. Check that the UPDATE indicator at the upper left is blinking.



Starting the Firmware Update Tool (BootloaderDownloadApp)

4. Double-click the update program (BootloaderDownloadApp.exe) in the folder placed directly under drive C (c:\). The Firmware Update Wizard starts.
5. Check that the serial number of the WT300E that is connected is shown on the left side of the tool window, and click **Start**.

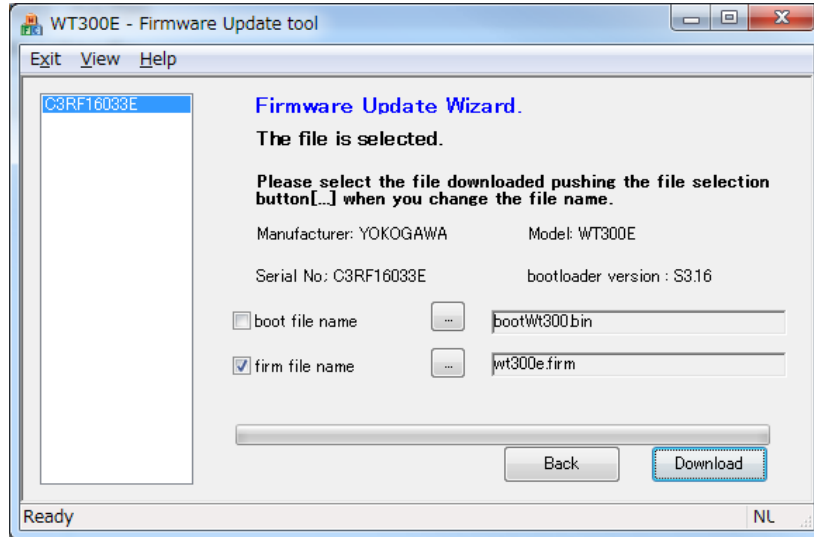


6. The update tool can update the following two programs.

- Boot program (bootWt300.bin)
- WT300E firmware (wt300e.firm)

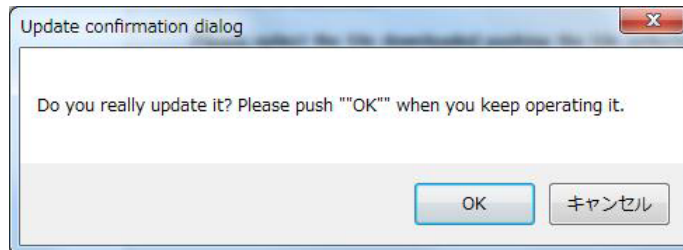
Select the check box for the program you want to update, and press **Download**.

* Update of the boot program is not necessary. Please do not put the check in the “boot file name.”



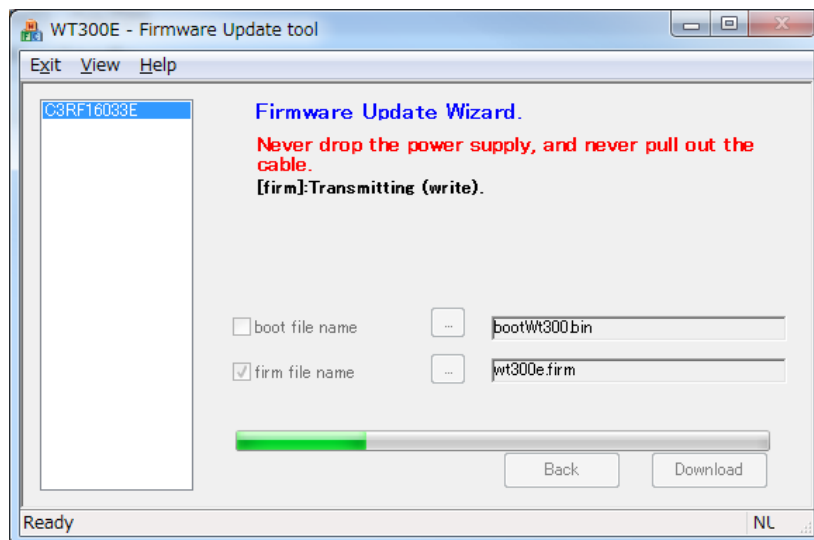
Executing the Firmware Update

7. In the Update confirmation dialog box, click **OK** to start the firmware update.



8. A progress bar shows the progress.

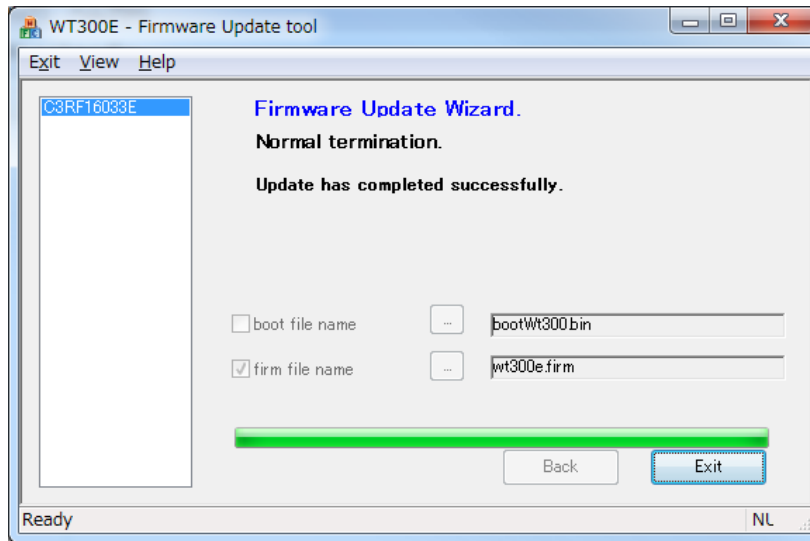
Never remove the USB cable or turn off the WT300E until the update is finished.



Finishing the Firmware Update

9. If the update finishes successfully, the following screen appears.

Click **Exit** to close the update tool.



Restarting the WT300E and Checking the Firmware Version

10. Turn off the WT300E and then turn it back on.

Check that the following code appears in the opening message.

- Code.87: This indicates that the WT300E firmware has been updated and that the WT300E setup parameters have been initialized.
 - Updated firmware version
- * You can also check the firmware version by pressing:
UTILITY (SHIFT+SETUP) → "inFo" → "VER"