

This manual describes the steps to update the firmware of the LS3300 AC Power Calibrator (hereafter referred to as the LS3300). When updating, be sure to follow the instructions in this manual.

Disclaimers

By downloading and installing this software, the customer agrees to all of the following disclaimers.

- Yokogawa bears no liability for any problems occurring as a result of downloading or installing this software.
- Yokogawa bears no responsibility for any damage caused directly or indirectly as a result of using this software.
- This software is provided free of charge, however no unlimited warranty against software defects exists, nor is any claim made that the product is free of all defects whatsoever. Also, Yokogawa is not always able to repair defects ("bugs") in, or respond to questions or inquiries about this software.
- Yokogawa reserves all rights to this software, including but not limited to all property rights, ownership rights, and intellectual property rights.

Trademarks

- Microsoft and Windows are registered trademarks or trademarks of Microsoft Corporation in the United States and/or other countries.
- Adobe and Acrobat are either registered trademarks or trademarks of Adobe Inc.
- Other company and product names are registered trademarks or trademarks of their respective holders.
- In this manual, the ® and TM symbols do not accompany their respective registered trademark or trademark names.

Preparations before Updating

Installing the USB Driver

Connect the LS3300 to a PC with a USB cable, and update the firmware. To communicate via USB interface, YOKOGAWA's USB driver (YKMUSB) needs to be installed in the PC. You can download it from YOKOGAWA website.

<https://tmi.yokogawa.com/library/documents-downloads/software/usb-drivers/>

Required driver: YKMUSB

Checking the Firmware Update Tool

Unzip the downloaded firmware file, and check that the following contents are in the folder.

- | | |
|----------------------------------|--|
| • Bin | (a folder containing the instrument's firmware data) |
| • FirmwareUpdateToolSelector.bat | (update program) |
| • LS3300UpdateIM_EN.pdf | (firmware update procedure in English (this manual)) |
| • LS3300UpdateIM_JA.pdf | (firmware update procedure in Japanese) |

Note

When you update the firmware, the LS3300 setup parameters will be lost. If necessary, back up the setup parameters before updating.

Firmware Update Procedure

Operating the LS3300

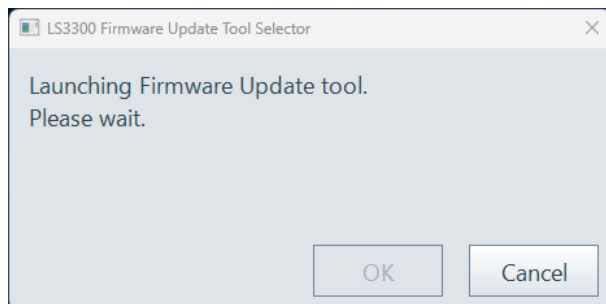
1. Using a USB cable, connect the USB port for PCs on the rear panel to the PC.
2. While holding down the **ESC** key, turn on the power switch.
Hold down the **ESC** key until all the LEDs on the panel illuminate. The instrument will start in firmware update mode.
3. Check that only a single LS3300 running in firmware update mode is connected to the PC.

Operating the Firmware Update Tool

4. In the PC Device Manager, check that the PC has detected the LS3300.

5. Run the update program (FirmwareUpdateToolSelector.bat) in the folder.

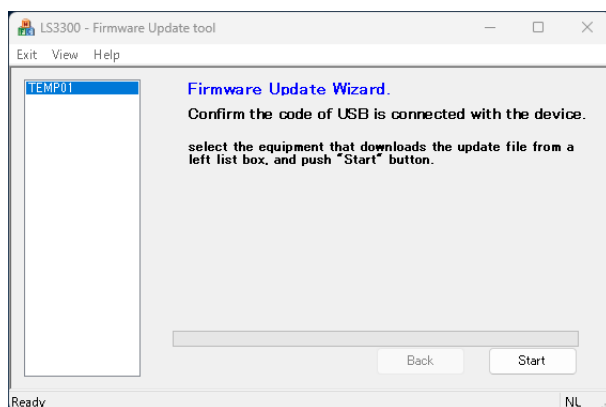
The update program will automatically check the connection with the LS3300.



Note

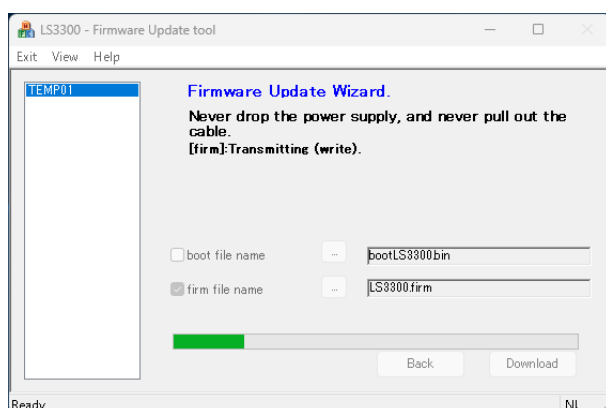
If the connection cannot be confirmed automatically, an error message will be displayed. In that case, reconnect to the LS3300 correctly and click OK.

6. When the connection is confirmed automatically, the firmware update tool will open. Click Start. Firmware update will begin.

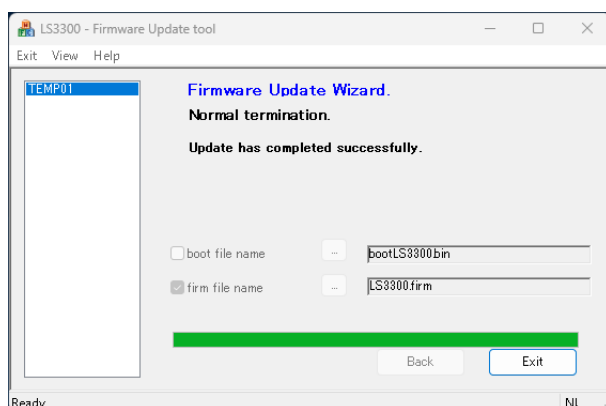


7. A progress bar shows the progress.

Do not remove the USB cable or turn off the LS3300 until updating is finished.



8. When the update has completed successfully, click Exit.
The firmware update tool closes.



Update Completion and LS3300 Restart

9. When the update has completed successfully, the LS3300 restarts automatically.
It takes about 30 seconds for the instrument to restart after updating. Wait for the display to change from “LS3300” to the top screen. Do not turn off the power while waiting.

Checking the LS3300 Firmware Version

10. On the top menu, press the **UTILITY** soft key or the **UTILITY** key.
11. The following product information screen appears. Check that the firmware version has been updated.
The hardware version will remain the same.

